

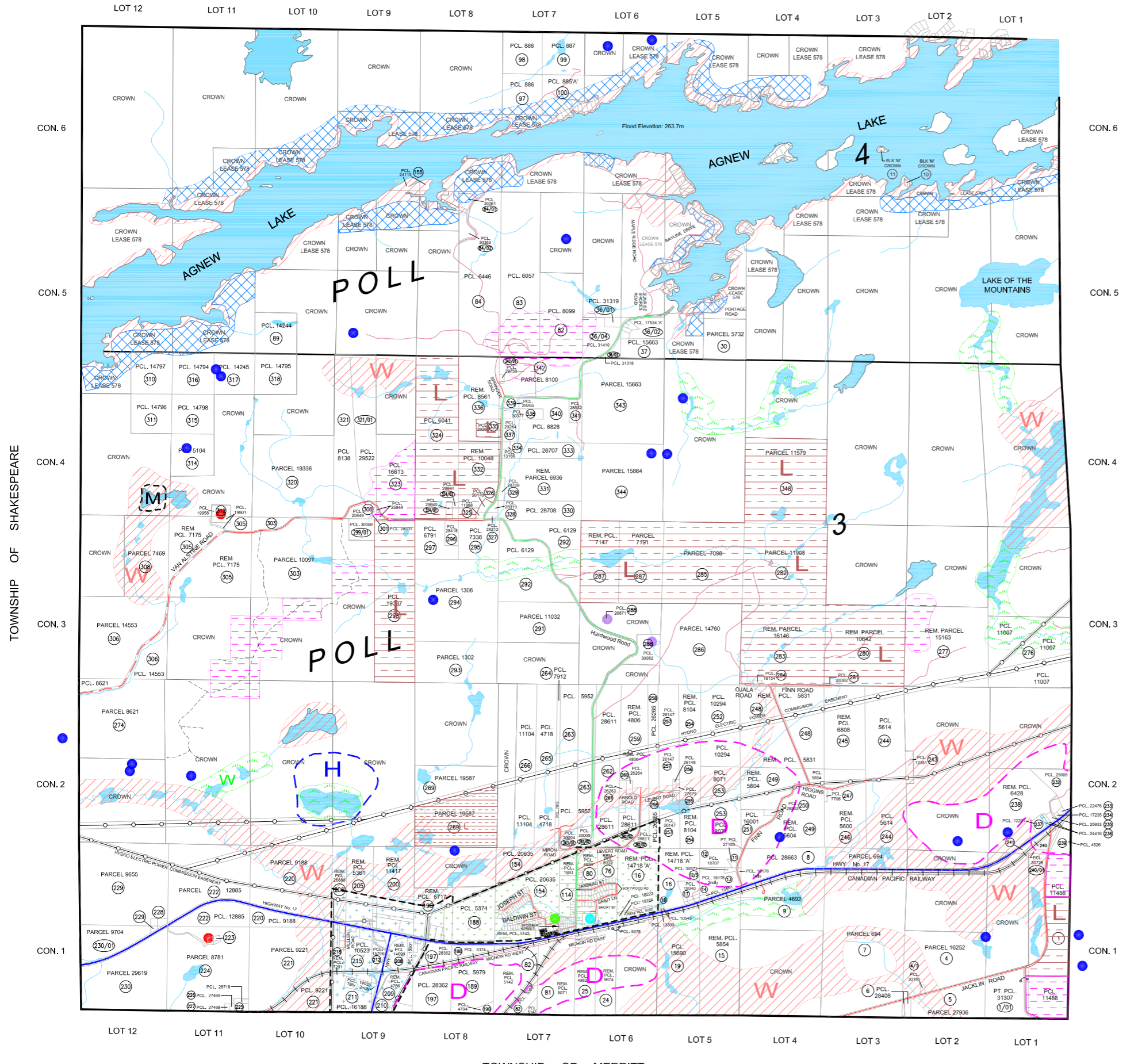
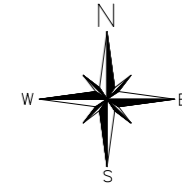
TOWNSHIP OF PORTER

Official Plan for the CORPORATION OF THE TOWNSHIP OF BALDWIN

Schedule 'A' Land Use Plan



SCALE
1:20,000
0 0.5 1.0 km
May 28, 2020



Legend

- Urban Settlement Area**
 - Hamlet Areas
 - Hamlet Centre Commercial
 - Highway Commercial
 - Urban Settlement Area Boundary
- Urban Area**
 - Rural Lands
 - Industrial Extractive
 - Mineral Aggregate Resource
 - Licensed Pits and / or Quarries
 - Seasonal Residential and Waterfront Development
 - Waste Management System
 - Environmental Protection Area
- Natural Heritage Features and Areas**
 - Deer Yards
 - Moose Aquatic Feeding Areas
 - Heron Rookeries
 - Wetlands Unclassified
- Community Facilities**
 - Community/Fire Hall
 - Parks and Playgrounds
- Transportation and Communication**
 - Provincial Highways
 - Township Road
 - Township Road (Seasonally Maintained)
 - Private Road
 - Railway Line
 - Hydro Transmission Corridor
 - Communication Towers
- Natural and Human-Made Hazards**
 - Mine Hazard
 - Flood Elevation - Agnew Lake - 263.7m G.S.C.

Digital Mapping Provided By:
Tulloch Geomatics
Elliot Lake, Ontario

Tulloch Consulting Ltd